



PEACE  
*of* CHRIST PARISH

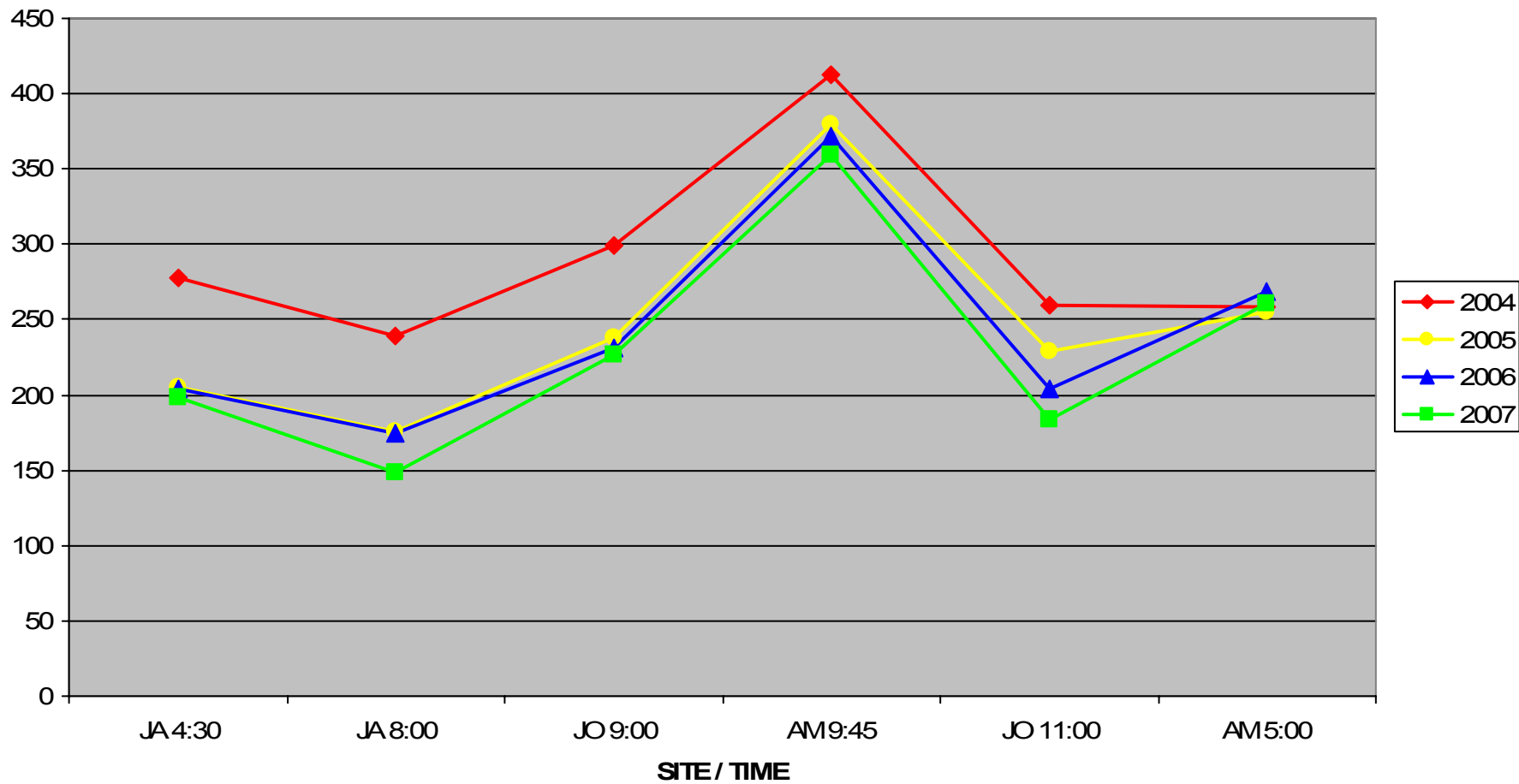
ST. AMBROSE • ST. JAMES • ST. JOHN THE EVANGELIST

# Demographic Study

Parish  
and  
Surrounding Community

# Parish Facts

OCTOBER MASS ATTENDANCE

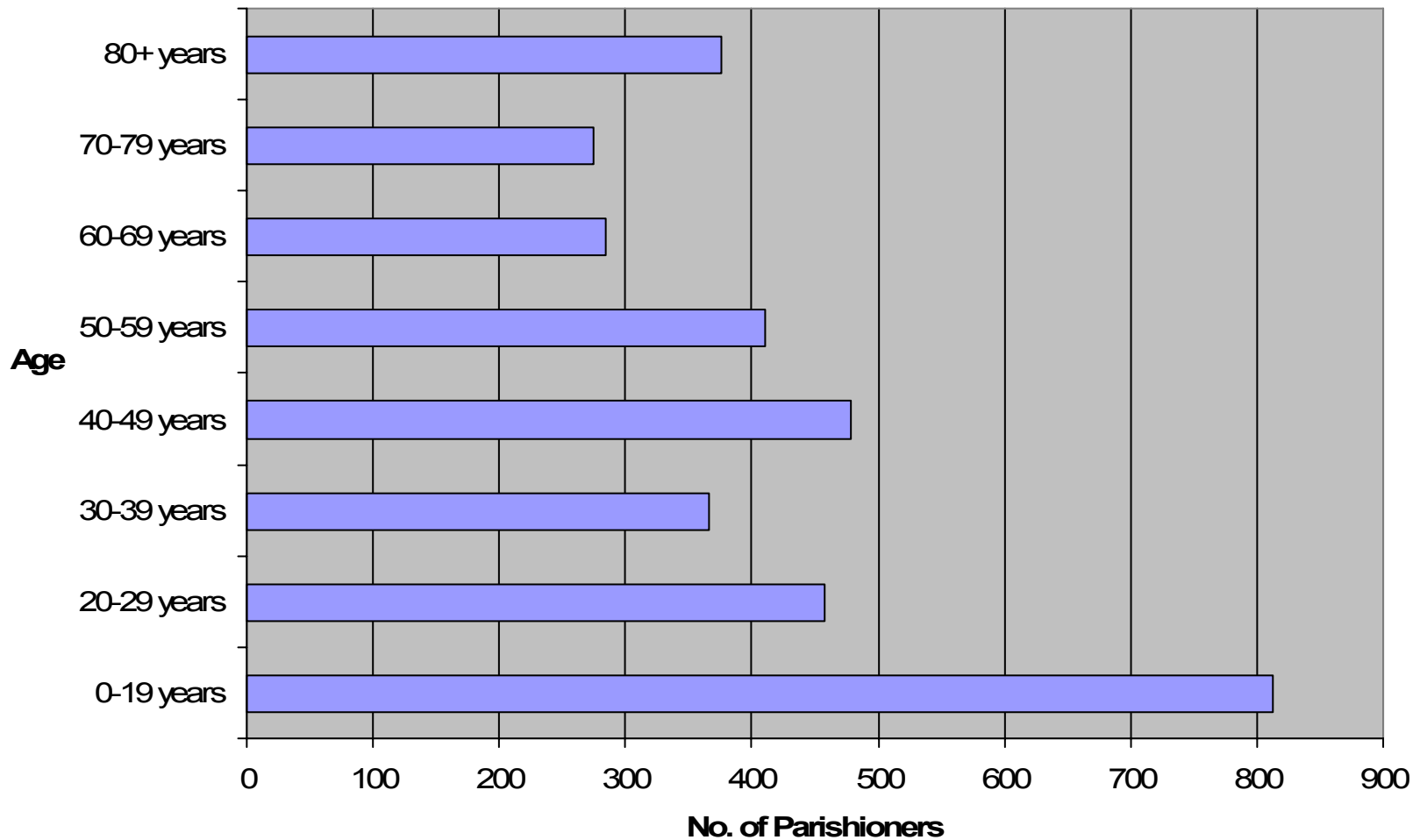


# Parish Facts

- 2007 October Mass attendance (1377 total) was 12th highest in Diocese of Rochester
- Range was from 3142 (St. Lawrence, Greece) to 42 (Emmanuel Church of the Deaf)

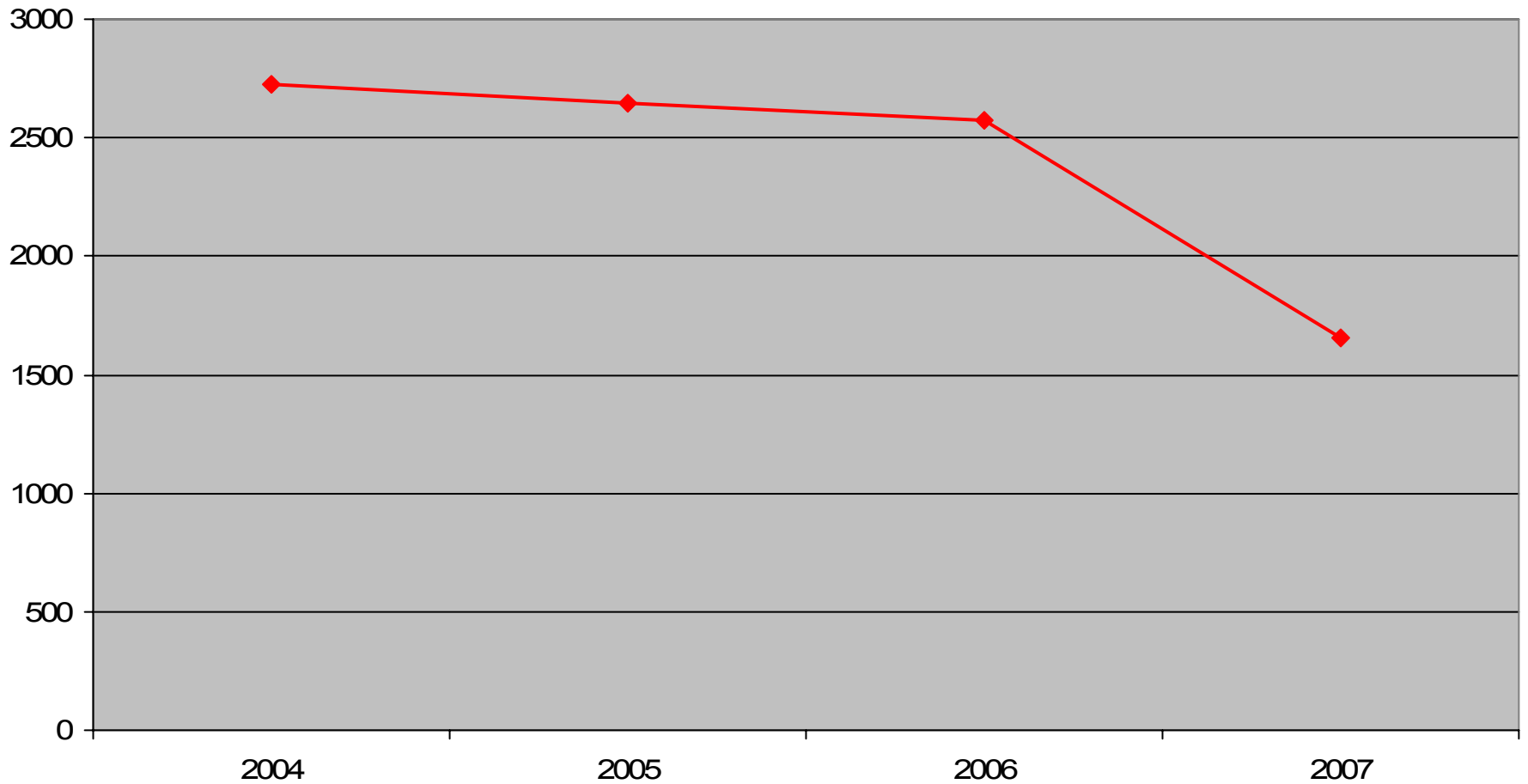
# Parish Facts

## Distribution of Parishioners by Age



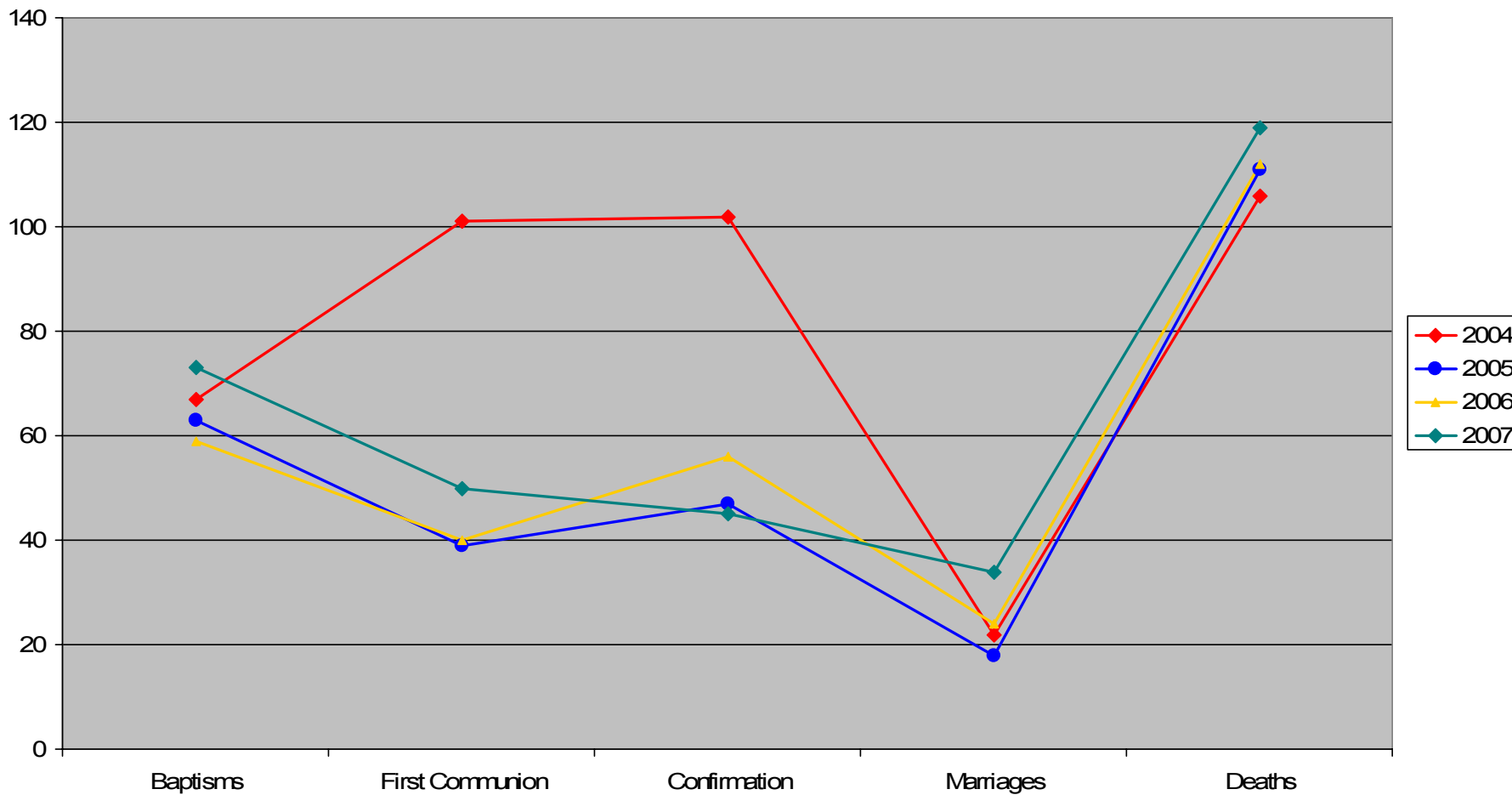
# Parish Facts

## POC Households



# Parish Facts

## Sacramental Data



# Sacramental Data

- 2007 Funerals -- tied for first with All Saints, Corning, for highest number in diocese
- 2007 marriages -- 6th highest in diocese
- 2007 baptisms to deaths ratio: approximately 3:5



PEACE  
*of* CHRIST PARISH

ST. AMBROSE • ST. JAMES • ST. JOHN THE EVANGELIST

# Parish Facts

## **Faith Formation in Peace of Christ Parish**

# Family Faith Formation Facts

## **For children, youth and families**

- 2 opportunities for systematic religious education:
  - summer session for children and youth grades 1-8 (one week)
  - home study
- family gatherings – opportunity for all families to join for a meal and participate in Family Learning Experiences (6 per year)
- vacation bible camp (1 week during the summer, youth 7th grade+ are invited to be youth leaders)
- currently 75 families are enrolled with 108 students from grades 1-8

# Family Faith Formation Facts

## **Junior high faith formation opportunities**

- junior high group nights on Sunday evenings
- summer session
- family gatherings
- being a youth leader at vacation bible camp

# Family Faith Formation Facts

**Sacramental preparation**

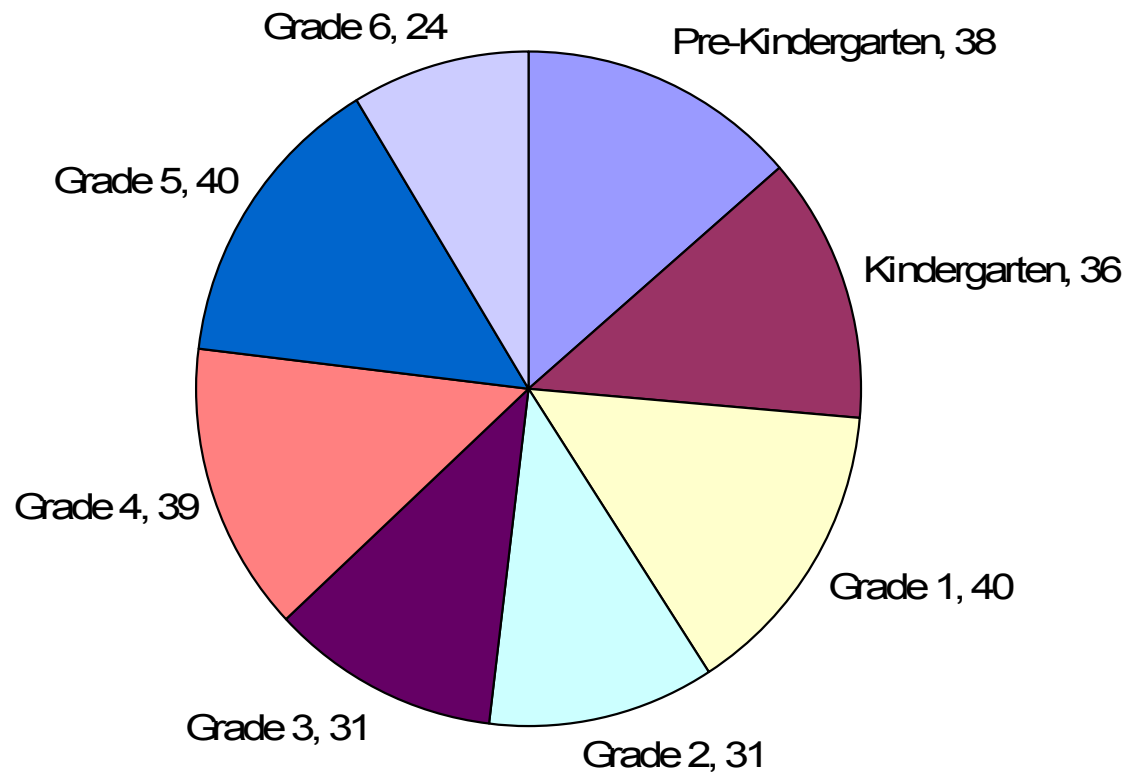
# Family Faith Formation Facts

## **Adult faith formation**

- Bible studies in fall and spring this past year – approximately 15 participated
- Easter parish retreat with Fr. Michael Crosby – Sunday evening 100 attended, Monday noon 60 and Monday evening 110
- Lenten retreat
- Women's gatherings

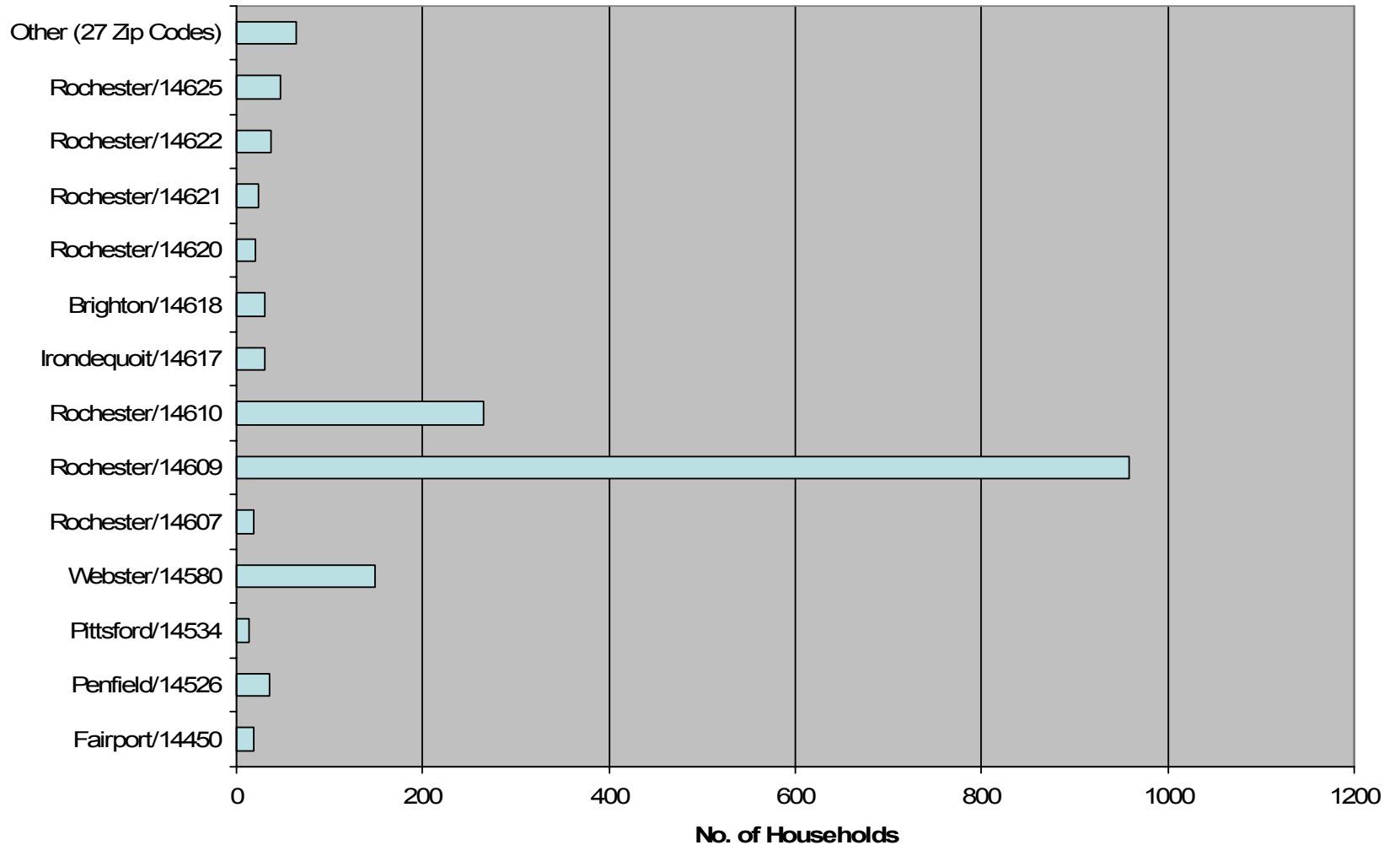
# Parish Facts

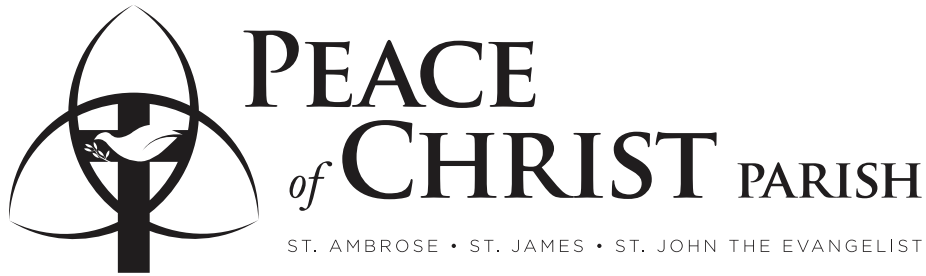
## St. John Neumann School



# Parish Facts

Distribution of Households by Zip Codes





# **Information about the area within our boundaries**

Sources: Precept, Census  
Bureau, Claritas

# Community Facts

## Population

- Decreased 7.5% (2,119) since 1990
- Projected to decrease 3.4% by 2013

# Community Facts

## Diversity

- Very high based on number of different lifestyle and racial/ethnic groups in the area

# Community Facts

## **Lifestyle diversity**

- Top segment is established empty-nesters (22.6%)
- Of six major segment groupings:
  - 1% affluent (US 15%)
  - 57% Middle American families (US 31%)
  - 22% young and coming (US 15%)
  - 3% rural (US 13%)
  - 11% senior life (US 7%)
  - 7% ethnic & urban diversity (US 18%)

# Community Facts

## **Ethnic/racial diversity**

- Very high based on the total number of different groups present
- 75.2% Anglos (US 66%)
- All others make up only 24.8% which is below the national average of 34% (15.4% African-Americans, 6% Hispanic)
- African-Americans projected to be fastest growing group, increasing by 12.5% by 2013

# Community Facts

## **Age Diversity**

- Most significant group in terms of numbers and comparison to national averages is Survivors (ages 27-47) who make up 33.2% of the population (US 29%)

# Community Facts

## Family structures

- Below average presence of married persons and two-parent families
- 33% single (never married) – US 27%
- 19% divorced or widowed – US 16%
- 48% married – US 57%
- 28% of households with children are led by single mothers, 48% by married couples, 7% by single fathers

# Community Facts

## **Education level of adults**

- 85.8% of population aged 25+ has graduated from high school (US 80.4%)
- 31.2% of population aged 25+ has graduated from college (US 24.4%)

# Community Facts

## **Household concerns**

- “The basics” is the most significant concern based on total number of households and comparison to national averages
- Concerns likely to exceed the national average: adequate food, better quality healthcare, finding life direction, health insurance, finding companionship, time for recreation/leisure

# Community Facts

## **Overall stress level is average**

- Average in characteristics known to contribute to community problems (households below poverty line, adults without a high school diploma, households with a single mother)
- Unusually high concern about issues such as community problems, family problems, and basic necessities such as food, housing and jobs

# Community Facts

## **Overall resistance to change**

- The area's potential resistance to change is likely to be somewhat high 39.7% (US 37.3%)

# Community Facts

## **Faith receptivity**

- 39% not involved (US 35%)
- 33% somewhat involved (US 30%)
- 28% strongly involved (US 35%)

# Community Facts

## **Preferred church programs**

- Church program preferences likely to exceed the national average are food pantry/clothing resources, care for the terminally ill, active retirement programs, 12-step programs
- As an overall category, programs related to recreation are the most significant based upon total number of households and comparison to national averages